

See discussions, stats, and author profiles for this publication at: <http://www.researchgate.net/publication/257137556>

# Nablus–Jenin Highway Environmental Assessment, Acoustic Issues

CHAPTER · JANUARY 2001

---

CITATIONS

2

1 AUTHOR:



[Issam Ashqer](#)

An-Najah National University

**109** PUBLICATIONS **1,102** CITATIONS

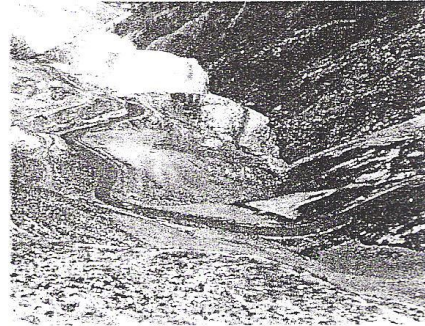
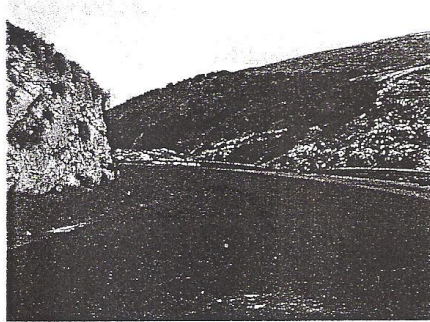
SEE PROFILE

NABLUS-JENIN HIGHWAY  
ENVIRONMENTAL ASSESSMENT  
April 9, 2001

**USAID**  
The US Agency for international Development



السلطة الوطنية الفلسطينية  
وزارة الأشغال العامة  
PALESTINE NATIONAL AUTHORITY  
MINISTRY OF PUBLIC WORKS



Prepared By: Wilbur Smith Associates  
In Association with: Universal Group for Engineering and Consulting



### 3.11 ACOUSTIC ISSUES

Ambient noise has not yet been officially monitored or studied in Palestine. Scientific measurements and data are not available for various sensitive receptor sites along the existing road or in the general study area. Appendix 18 presents the technical report prepared for this project. Figure 8 shows the noise sampling locations. There are, at present, no Palestinian standards for monitoring noise impacts on sensitive land-use receptors.

#### 3.11.1 Acoustic Issues Background

Noise pollution is unwanted sound in the form of energy, measured in decibels (dB). Noise, generally from urbanization and industrialization, is recognized as an environmental condition adversely affecting basic human health and well-being. Major sources of noise pollution are motor vehicle traffic, construction, and industrial activities. Sound has an additive nature, meaning that although a single source may not be 'noisy', the combination of several sources can create a severe noise problem. The type, age, maintenance level and quantity of vehicles, as well as the location of industrial activities and distance from the source to the receptor affect the level of noise.

A survey conducted in the West Bank indicated that 69.4% of households are seldom exposed to noise, 14.3% are sometimes exposed to noise and 16.9% of households are exposed to noise very often. Traffic noise was cited as the major source of noise for 54.2% of households, while construction work is the major source for 24.7%.

The primary acoustic threat from this project is creation of additional noise or vibration impacts by locating the facility adjacent to a number of communities.